



MERRIGAN & LeFEBVRE Realty, Inc.

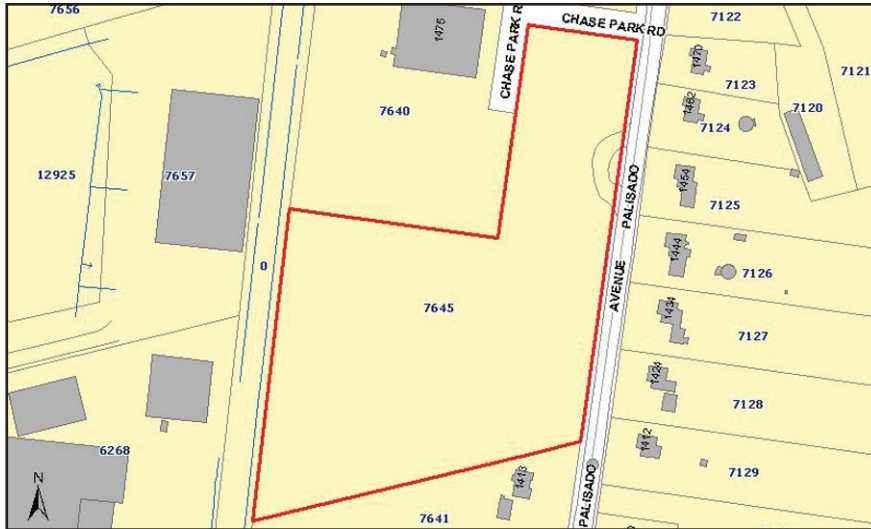
commercial • industrial • land • intermodal

Merrigan & LeFebvre Realty Inc. • 560 Halfway House Road • Windsor Locks, CT 06096

Phone: (860) 623-2389 • Fax (860) 623-5109 • www.merriganlefebvre.com

LAND FOR SALE

1433 Palisado Avenue, Windsor, CT 06095 • Hartford County



■ Property Details

Site

Property Type: Land
Site Area: 7.86 Acres
Zone: Residential AA (1 Acre),
Industrial 2 (6.86 Acres)

Price

Price: \$195,000

Utilities

Sewer: Public Available, Septic Required
Water: Public Available, Well Required

Taxes

Assessment: \$60,760
Mill Rate: 29.3
Taxes: \$1,780

■ Property Description

Great location for single home or possible industrial warehousing. Well and septic required. Public water and sewer available, but needs to be extended to this location. All environmental inspections to be at buyers expense.

■ Directions

I-91N to Exit 42, L on Lawnacre, R onto Rte 159. I-91S to Exit 42, R onto Rte 159.

■ For More Information Contact

Darryl LeFebvre
(860) 623-2389
dlefebvre@merriganlefebvre.com

* Information contained herein is believed to be accurate, but is subject to errors, omissions or prior sale, lease or withdrawal without notice.