



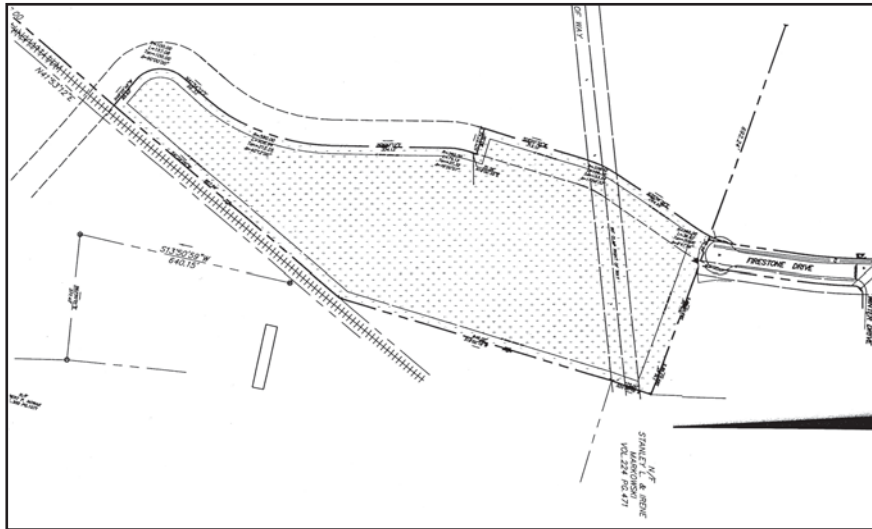
# MERRIGAN & LeFEBVRE Realty, Inc.

commercial • industrial • land • intermodal

Merrigan & LeFebvre Realty Inc. • 560 Halfway House Road • Windsor Locks, CT 06096  
Phone: (860) 623-2389 • Fax (860) 623-5109 • [www.merriganlefebvre.com](http://www.merriganlefebvre.com)

## LAND FOR SALE

Firestone Drive, Suffield, CT 06078 • Hartford County



### ■ Property Details

---

#### Site

Property Type: Land  
Site Area: 17.8 Acres  
Zone: PDIP - Industrial/Mfg. Warehouse/Dist.

#### Price

Price: \$50,000 per acre

#### Amenities/Special Features

Rail Accessible

#### Utilities

Sewer: Public Available  
Water: Public Available  
Gas: Available  
Electricity: Available

### ■ Property Description

---

17.8 Acres Zoned PDIP, Firestone Drive, Suffield. Rail, Utilities at road, Surveys.

### ■ For More Information Contact

---

Dan Carstens  
Office (860) 623-2389 / Cell (860) 306-3214  
[dcarstens@merriganlefebvre.com](mailto:dcarstens@merriganlefebvre.com)